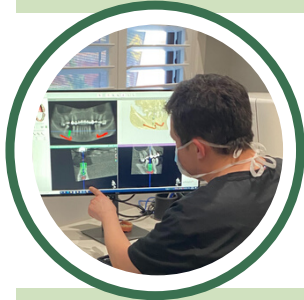


ALL AT ONCE[®]

IMPLANT BRIDGE



Consultation

1

REVIEW ALL OPTIONS

Discuss tooth modification if needed. Referral to surgeon if required.



Data Collection

2

CBCT SCANS PHOTOS

Tooth modification, dental information is collected and the first payment is due which sets surgery date.



Pre Surgery Contact

3

PHONE CALL / IN PERSON VISIT

Review photos of the new smile, give post op care instructions questions answered for the surgery visit, second payment is due.



Surgery

4

ALL AT ONCE[®] SMILE

Patient gets ALL AT ONCE[®] Smile in chair, under sedation or with GA.



Checks

5

2 WEEK AND 4 MONTH

Bite will be adjusted and access holes filled at 2 weeks with temporary fillings. Implants torque tested at 4 months and access holes filled with permanent fillings.

General steps for ALL AT ONCE[®] protocol